



BENNETT

INTERNATIONAL

education consultancy

DUBAI'S INCLUSIVE EDUCATION STANDARDS: A PARENT'S ROADMAP

An Essential Guide for Families Navigating Dubai's
Inclusive Education Standards & Support Systems



TABLE OF CONTENTS

Introduction	1
Dubai's commitment to every child	2
The 10 Standards: A framework for your child's educational support	3
What this means for you as a collaborative partner	5
Moving forward with confidence	6
Your next steps	6
Final thoughts	7
Additional resources for further reading	8





Introduction

If you're a parent in Dubai with a child who has additional educational needs, you might feel like you're navigating uncharted waters. The wonderful news? You're not alone, and Dubai has created a comprehensive framework to support every child—including those the UAE proudly calls "Students of Determination."

Let's explore what these standards mean for you and your family, in simple terms that help you understand the supportive foundation that's been built for your child's success and wellbeing.

Dubai's commitment to every child

Dubai is leading the way in inclusive education through meaningful action. Under the thoughtful guidance of the Knowledge and Human Development Authority (KHDA) and in alignment with the UAE government's vision, the city has established the Dubai Inclusive Education Policy Framework. This framework provides schools with clear guidance to support every student's success.

Think of these standards as a helpful roadmap that outlines the supportive foundation available for your child and how you can work collaboratively with your school to access it.



The 10 Standards: A Framework for Your Child's Educational Support

1. Identification & Early Intervention

What it means: Schools work to identify and address learning differences early, creating timely support plans.

For your family: When you notice your child may benefit from additional support, you can approach the school to discuss early assessment and collaborative planning.

2. Admissions, Participation & Equity

What it means: Schools welcome students with additional needs and work to ensure all children can participate in the full school experience.

For your family: Your child can look forward to participating in all aspects of school life—academics, sports, arts, and activities—with appropriate support.

3. Leadership & Accountability

What it means: School leadership teams are committed to creating inclusive environments and addressing any concerns that arise.

For your family: When you have questions or suggestions, you can reach out to school leaders knowing they're dedicated to continuous improvement.

4. Systems of Support

What it means: Schools build teams of trained staff, support teachers, and learning assistants who work together to support student success.

For your family: Your child benefits from a network of qualified professionals who understand different learning needs and collaborate on their support.

5. Special Education Centres as a Resource

What it means: Specialized centres provide expertise, therapy services, and resources that complement school-based support.

For your family: You have access to additional specialist knowledge and services that can enhance your child's educational experience.

6. Co-operation & Partnerships

What it means: Schools value collaboration between educators, parents, therapists, and healthcare professionals.

For your family: You're welcomed as an important partner in your child's educational journey, and your insights are valued and incorporated into their support plan.

7. Fostering a Culture of Inclusion

What it means: Schools actively create environments where diversity is celebrated and all students feel valued.

For your family: Your child can feel confident and welcomed, knowing their unique qualities are appreciated and supported.

8. Monitoring, Evaluation & Reporting

What it means: Schools track student progress and continuously work to improve their inclusion practices.

For your family: You can expect regular communication about your child's development and see ongoing improvements in how the school supports all learners.

9. Resourcing for Inclusive Education

What it means: Schools plan and budget for the training, technology, and accessibility features needed to support diverse learners.

For your family: The support your child needs is considered an important part of the school's educational planning and resources.

10. Pathways Beyond School

What it means: Schools help students with additional needs prepare for future opportunities in higher education, training, and employment.

For your family: Your child's educational journey includes thoughtful preparation for their future goals and aspirations.

What this means for you as a collaborative partner

Understanding these standards helps you work effectively with your child's school as a supportive partner. Here's how to use this knowledge:

Engage in Meaningful Conversations: When meeting with your child's school, you can discuss how these standards create opportunities for collaboration and support.

Embrace Your Role: You have an important role in your child's Individual Education Plan (IEP) and can look forward to regular updates on their progress.

Build Partnerships: Schools welcome you as a collaborative partner. Your insights about your child are valuable and can help create the best possible support plan.

Stay Connected: Keep track of meetings, reports, and communications. This helps ensure everyone stays aligned on your child's progress and goals.

Reach Out When Needed: If you have questions or would like additional support, you can approach KHDA for guidance and assistance.

Moving forward with confidence

These standards reflect Dubai's commitment to supporting every child's unique educational journey. Your child's additional needs make them deserving of thoughtful, individualized support that helps them flourish.

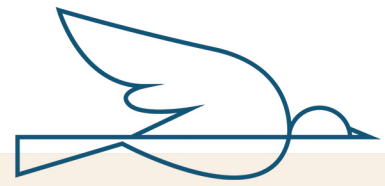
If you're feeling uncertain about navigating the system, remember that understanding these standards gives you the foundation to engage meaningfully with your child's school. You're not asking for special treatment; you're working within Dubai's educational framework to ensure your child thrives.



Your next steps

Consider reviewing your child's current school experience in light of these supportive standards. Are there opportunities for enhanced collaboration? Areas where you might explore additional support? Remember, you're part of a community working together for your child's success.

Every family's journey is unique, but every child benefits from this strong foundation of educational support. These standards aren't just policy documents—they represent Dubai's commitment to your child's educational success, creating a framework for collaboration and growth.



Final Thoughts

If this guide has provided you with valuable insights into Dubai's inclusive education standards and encouraged you to take a more active role in your child's educational journey, remember: you do not have to do it alone. Navigating the complexities of support plans, school collaboration, and Dubai's education policies may raise questions along the way, and professional guidance can make all the difference.

Whether you are considering the best ways to support your child under these standards, want to strengthen your partnership with your child's school, or simply need reassurance as you advocate for your child's needs, we're here for you. We work alongside families to ensure that every child benefits from Dubai's commitment to inclusive, individualized education.

If you have questions about the next steps, wish to explore available resources, or would like expert advice tailored to your situation, we invite you to take the next step with confidence.

Schedule your
complimentary consultation



Book a complimentary 20-minute discovery call with us to discuss your child's experience, address any immediate concerns, and learn how our expertise in the UAE's inclusive education system can help you move forward. During our conversation, we'll help you clarify your priorities, explore your options, and create a plan that supports your child's wellbeing and academic success.

Every family's journey is unique, and with the right support, each challenge can open the door to new opportunities and growth for your child.

Additional resources for further reading

For those who want to explore Dubai's inclusive education policies in more detail, here are valuable resources:

- [Dubai Inclusive Education Policy Framework \(KHDA, 2017\)](#)
- [KHDA Parent Guide to Inclusive Education \(2021\)](#)
- [UAE Ministry of Education – People of Determination: Inclusive Education](#)
- [KHDA SEN Categories](#)
- [KHDA SEND Policy for Schools](#)
- [Dubai Education Strategy 2033 – Inclusive Education for Lifelong Learning](#)

Your child's educational journey is supported by Dubai's thoughtful commitment to inclusive education, creating opportunities for every student to reach their full potential.